

हमारा विश्वास... हर एक विद्यार्थी है स्वास

**JEE
MAIN
Sept.
2020**

QUESTION PAPER WITH SOLUTION

PHYSICS _ 2 Sep. _ SHIFT - 2



MOTION™

H.O. : 394, Rajeev Gandhi Nagar, Kota
www.motion.ac.in | ✉: info@motion.ac.in

हमारा विश्वास... हर एक विद्यार्थी है खास

1. If momentum (P), area (A) and time (T) are taken to be the fundamental quantities then the dimensional formula for energy is:

(1) $[P^{1/2} AT^{-1}]$ (2) $[PA^{1/2}T^{-1}]$ (3) $[PA^{1/2}T^{-1}]$ (4) $[P^2AT^{-2}]$

Sol. (2)

$[P] = MLT^{-1} \leftarrow$ momentum

$[A] = M^0L^2T^0 \leftarrow$ Area

$[T] = M^0L^0T^1 \leftarrow$ Time

Let $[E] = P^x A^y T^z$

$ML^2T^{-2} = [MLT^{-1}]^x [L^2]^y [T]^z$

$= M^x L^{x+2y} T^{-x+z}$

Comparing both sides :-

$x = 1$ (i)

$x + 2y = 2 \Rightarrow 1 + 2y = 2$ or, $y = \frac{1}{2}$ (ii)

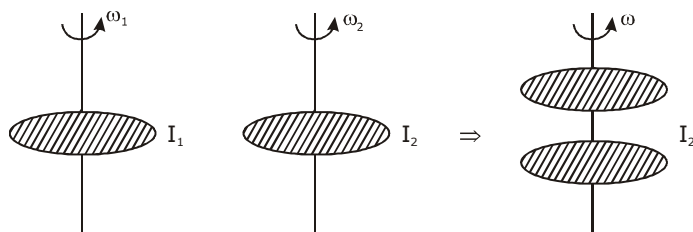
$z - x = -2 \Rightarrow z - 1 = -2$ or $z = -1$ (iii)

$\therefore [E] = [P^1 A^{1/2} T^{-1}]$

2. Two uniform circular discs are rotating independently in the same direction around their common axis passing through their centres. The moment of inertia and angular velocity of the first disc are 0.1 kg-m^2 and 10 rad s^{-1} respectively while those for the second one are 0.2 kg-m^2 and 5 rad s^{-1} respectively. At some instant they get stuck together and start rotating as a single system about their common axis with some angular speed. The Kinetic energy of the combined system is:

(1) $\frac{2}{3} \text{ J}$ (2) $\frac{10}{3} \text{ J}$ (3) $\frac{5}{3} \text{ J}$ (4) $\frac{20}{3} \text{ J}$

Sol. (4)



$$I_1 \omega_1 + I_2 \omega_2 = (I_1 + I_2) \omega$$

$$\omega = \frac{I_1 \omega_1 + I_2 \omega_2}{I_1 + I_2} = \frac{0.1 \times 10 + 0.2 \times 5}{0.1 + 0.2} = \frac{1 + 1}{0.3} = \frac{2}{0.3}$$

$$\omega = \frac{20}{3}$$

CRASH COURSE
FOR JEE ADVANCED 2020

FREE Online Lectures Available on YouTube

Go Premium at ₹ 1100

◆ Doubt Support ◆ Advanced Level Test Access
◆ Live Test Paper Discussion ◆ Final Revision Exercises

Start Date: **07 Sept. 2020**

$$\text{Now find KE} = \frac{1}{2} I_1 \omega^2 + \frac{1}{2} I_2 \omega^2$$

$$= \frac{1}{2} (I_1 + I_2) \omega^2 = \frac{1}{2} \times 0.3 \times \left(\frac{20}{3} \right)^2$$

$$= \frac{1}{2} \times \frac{3}{10} \times \frac{20}{3} \times \frac{20}{3}$$

$$\frac{0.3}{2} \times \frac{400}{9}$$

$$\boxed{(K.E.)_f = \frac{20}{3}}$$

3. A particle is moving 5 times as fast as an electron. The ratio of the de-Broglie wavelength of the particle to that of the electron is 1.878×10^{-4} . The mass of the particle is close to:

(1) 4.8×10^{-27} kg (2) 9.1×10^{-31} kg (3) 9.7×10^{-28} kg (4) 1.2×10^{-28} kg

Sol. (3)

$$p = \frac{h}{\lambda}$$

$$\lambda = \frac{h}{p}$$

$$\frac{\lambda_{\text{Particle}}}{\lambda_e} = 1.878 \times 10^{-4}$$

$$\Rightarrow \frac{h}{p_{\text{particle}}} \times \frac{p_e}{h} = 1.878 \times 10^{-4} \Rightarrow \frac{p_e}{p_{\text{particle}}} = 1.878 \times 10^{-4}$$

$$\Rightarrow \frac{M_e \cdot V_e}{M_p \cdot V_p} = 1.878 \times 10^{-4} \Rightarrow M_p = \frac{M_e}{1.878 \times 10^{-4}} \times \left(\frac{V_e}{V_p} \right)$$

$$= \frac{9.11 \times 10^{-31}}{1.878 \times 10^{-4}} \times \frac{1}{5}$$

$$= \frac{7.11 \times 10^{-31}}{1.878 \times 10^{-4}} \times \frac{1}{5}$$

$$= 0.97 \times 10^{-27} \text{ kg}$$

$$= 9.7 \times 10^{-28} \text{ kg}$$

CRASH COURSE
FOR JEE ADVANCED 2020

FREE Online Lectures Available on **YouTube**

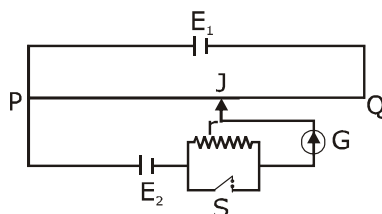
Go Premium at ₹ 1100

◆ Doubt Support ◆ Advanced Level Test Access
◆ Live Test Paper Discussion ◆ Final Revision Exercises

Start Date: **07 Sept. 2020**

हमारा विश्वास... हर एक विद्यार्थी है खास

4. A potentiometer wire PQ of 1 m length is connected to a standard cell E_1 . Another cell E_2 of emf 1.02 V is connected with a resistance 'r' and switch S (as shown in figure). With switch S open, the null position is obtained at a distance of 49 cm from Q. The potential gradient in the potentiometer wire is:



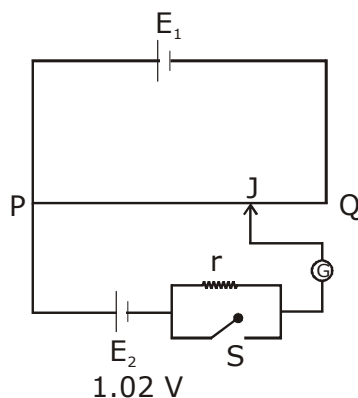
(1) 0.03V/cm

(2) 0.02 V/cm

(3) 0.04 V/cm

(4) 0.01 V/cm

Sol. (2)



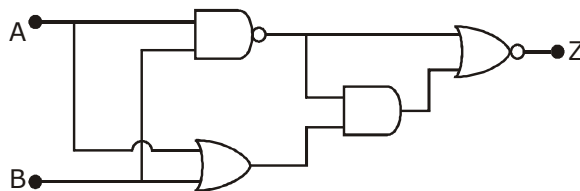
PQ = 1m

QJ = 49 cm

\therefore PJ = 51 cm

$$\frac{v}{\ell} = \frac{1.02}{51} = 0.02 \text{ v/cm}$$

5. In the following digital circuit, what will be the output at 'Z', when the input (A,B) are (1,0), (0,0), (1,1), (0,1):



(1) 0,1,0,0

(2) 1,1,0,1

(3) 0,0,1,0

(4) 1,0,1,1

CRASH COURSE
FOR JEE ADVANCED 2020

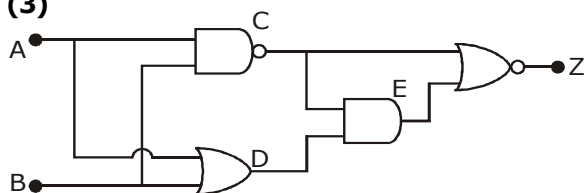
FREE Online Lectures Available on YouTube

Go Premium at ₹ 1100

◆ Doubt Support ◆ Advanced Level Test Access
◆ Live Test Paper Discussion ◆ Final Revision Exercises

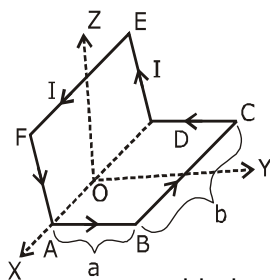
Start Date: **07 Sept. 2020**

Sol. (3)



A	B	$C = \overline{A \cdot B}$	$D = A + B$	$E = C \cdot D$	$Z = \overline{C + E}$
1	0	1	1	1	0
0	0	1	0	0	0
0	0	1	0	0	0
1	1	0	1	0	1
0	1	1	1	1	0

6. A wire carrying current I is bent in the shape ABCDEFA as shown, where rectangle ABCDA and ADEFA are perpendicular to each other. If the sides of the rectangles are of lengths a and b , then the magnitude and direction of magnetic moment of the loop ABCDEFA is:



(1) $\sqrt{2} abI$, along $\left(\frac{\hat{j}}{\sqrt{5}} + \frac{2\hat{k}}{\sqrt{5}}\right)$

(2) abl , along $\left(\frac{\hat{j}}{\sqrt{5}} + \frac{2\hat{k}}{\sqrt{5}}\right)$

(3) $\sqrt{2} abI$, along $\left(\frac{\hat{j}}{\sqrt{2}} + \frac{\hat{k}}{\sqrt{2}}\right)$

(4) abl , along $\left(\frac{\hat{j}}{\sqrt{2}} + \frac{\hat{k}}{\sqrt{2}}\right)$

Sol. (3)

LOOP = ABCD

$$\vec{M}_1 = (abI)\hat{k}$$

Loop DEFA

$$\vec{M}_2 = (abI)\hat{j}$$

$$\vec{M} = \vec{M}_1 + \vec{M}_2 = abI(\hat{j} + \hat{k})$$

$$|\vec{M}| = \sqrt{2}abI$$

$$\text{direction} = \text{along} \left(\frac{\hat{j}}{\sqrt{2}} + \frac{\hat{k}}{\sqrt{2}}\right)$$

$$\sqrt{2} abI, \text{ along } \left(\frac{\hat{j}}{\sqrt{2}} + \frac{\hat{k}}{\sqrt{2}}\right)$$

CRASH COURSE
FOR JEE ADVANCED 2020

FREE Online Lectures Available on YouTube

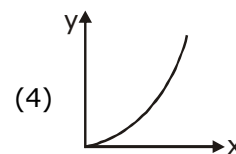
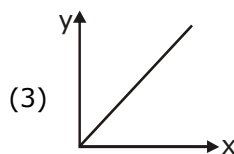
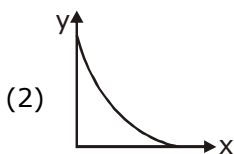
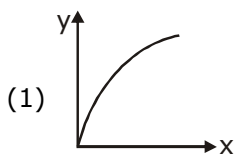
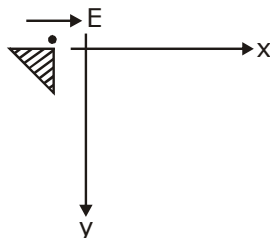
Go Premium at ₹ 1100

◆ Doubt Support ◆ Advanced Level Test Access
◆ Live Test Paper Discussion ◆ Final Revision Exercises

Start Date: **07 Sept. 2020**

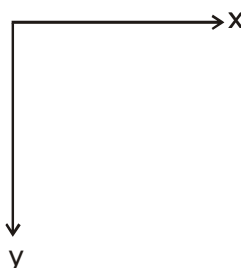
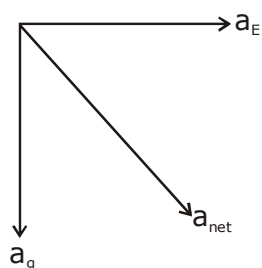
हमारा विश्वास... हर एक विद्यार्थी है खास

7. A small point mass carrying some positive charge on it, is released from the edge of a table. There is a uniform electric field in this region in the horizontal direction. Which of the following options then correctly describe the trajectory of the mass? (Curves are drawn schematically and are not to scale).



Sol.

(3)



Since it is released from rest.

And a_{net} is constant.

It will have straight line path along net ' a '.

8. In a plane electromagnetic wave, the directions of electric field and magnetic field are represented by \hat{k} and $2\hat{i} - 2\hat{j}$, respectively. What is the unit vector along direction of propagation of the wave.

(1) $\frac{1}{\sqrt{2}}(\hat{i} + \hat{j})$

(2) $\frac{1}{\sqrt{5}}(2\hat{i} + \hat{j})$

(3) $\frac{1}{\sqrt{5}}(\hat{i} + 2\hat{j})$

(4) $\frac{1}{\sqrt{2}}(\hat{j} + \hat{k})$

Sol.

(1)

$$\vec{E} \times \vec{B} = \hat{k} \times (2\hat{i} - 2\hat{j}) = 2\hat{k} \times \hat{i} - 2\hat{k} \times \hat{j} = 2\hat{j} + 2\hat{i}$$

$$\text{unit vector along } \vec{E} \times \vec{B} = \frac{1}{2\sqrt{2}}(2\hat{i} + 2\hat{j}) = \frac{1}{\sqrt{2}}(\hat{i} + \hat{j})$$

$$C = \frac{1}{\sqrt{2}}(\hat{i} + \hat{j})$$

CRASH COURSE
FOR JEE ADVANCED 2020

FREE Online Lectures Available on YouTube

Go Premium at ₹ 1100

◆ Doubt Support ◆ Advanced Level Test Access
◆ Live Test Paper Discussion ◆ Final Revision Exercises

Start Date: **07 Sept. 2020**

9. An inductance coil has a reactance of 100Ω . When an AC signal of frequency 1000 Hz is applied to the coil, the applied voltage leads the current by 45° . The self-inductance of the coil is:

(1) $6.7 \times 10^{-7} \text{ H}$ (2) $5.5 \times 10^{-5} \text{ H}$ (3) $1.1 \times 10^{-1} \text{ H}$ (4) $1.1 \times 10^{-2} \text{ H}$

Sol. (4)

L-R circuit

$$\tan 45^\circ = \frac{X_L}{R}$$

$$1 = \frac{X_L}{R} \Rightarrow X_L = R$$

$$\text{Now } Z = \sqrt{R^2 + X_L^2}$$

$$\text{or } Z = \sqrt{X_L^2 + X_L^2} = \sqrt{2X_L^2} = \sqrt{2}X_L$$

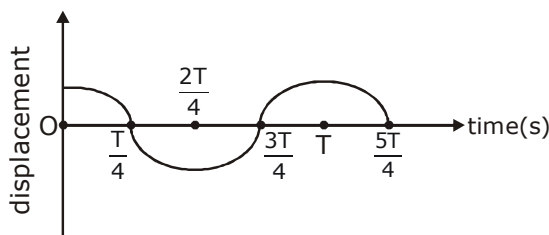
$$100 = \sqrt{2}X_L$$

$$X_L = \frac{100}{\sqrt{2}}$$

$$\omega L = \frac{100}{\sqrt{2}} \Rightarrow L = \frac{100}{\sqrt{2}\omega} = \frac{100}{\sqrt{2} \times 2\pi f} = \frac{100}{\sqrt{2} \times 2 \times 3.14 \times 1000}$$

$$= 1.1 \times 10^{-2} \text{ H}$$

10. This displacement time graph of a particle executing S.H.M. is given in figure : (sketch is schematic and not to scale)



Which of the following statements is/are true for this motion?

- (A) The force is zero at $t = \frac{3T}{4}$ (B) The acceleration is maximum at $t=T$
- (C) The speed is maximum at $t = \frac{T}{4}$ (D) The P.E. is equal to K.E. of the oscillation at $t = \frac{T}{2}$
- (1) (B), (C) and (D) (2) (A), (B) and (D) (3) (A) and (D) (4) (A), (B) and (C)

हमारा विश्वास... हर एक विद्यार्थी है खास

Sol. (A,B,C)

(A) at $t = \frac{3T}{4}$

Particle is at mean position

$$a = 0$$

$$F = 0$$

(B) at $t = T$,

Particle is at extreme.

F is maximum

$$a = \max$$

(C) at $t = \frac{T}{4}$; mean position

so, maximum velocity

$$(d) KE = PE$$

$$\frac{1}{2}k(A^2 - x^2) = \frac{1}{2}kx^2$$

$$A^2 - x^2 = x^2$$

$$A^2 = 2x^2$$

$$A = \sqrt{2}x$$

$$x = \frac{A}{\sqrt{2}} = A \cos \omega t$$

$$\cos \omega t = \frac{1}{\sqrt{2}}$$

$$\omega t = \frac{\pi}{4}$$

$$\frac{2\pi}{T} \cdot t = \frac{\pi}{4} \Rightarrow t = \frac{T}{8}$$

- 11.** In a Young's double slit experiment, 16 fringes are observed in a certain segment of the screen when light of wavelength 700 nm is used. If the wavelength of light is changed to 400 nm, the number of fringes observed in the same segment of the screen would be:

(1) 28 (2) 24 (3) 30 (4) 18

CRASH COURSE
FOR JEE ADVANCED 2020

FREE Online Lectures Available on **YouTube**

Go Premium at ₹ 1100

◆ Doubt Support ◆ Advanced Level Test Access
◆ Live Test Paper Discussion ◆ Final Revision Exercises

Start Date: **07 Sept. 2020**

Sol. (1)

$$y = \frac{D\lambda}{d}$$

$$\text{or } n_1 \frac{D\lambda_1}{d} = n_2 \frac{D\lambda_2}{d}$$

$$n_1\lambda_1 = n_2\lambda_2$$

$$\frac{n_1}{n_2} = \frac{\lambda_2}{\lambda_1}$$

$$n_2 = n_1 \cdot \frac{\lambda_1}{\lambda_2} \Rightarrow 16 \times \frac{700}{400} = 28$$

- 12.** A heat engine is involved with exchange of heat of 1915 J, -40J, + 125J and -QJ, during one cycle achieving an efficiency of 50.0%. The value of Q is:

(1) 980 J (2) 640 J (3) 40 J (4) 400 J

Sol. (1)

$$\eta = \frac{W}{\sum Q_+} = \frac{Q_1 + Q_2 + Q_3 + Q_4}{Q_1 + Q_3}$$

$$0.5 = \frac{1915 - 40 + 125 - Q}{1915 + 125}$$

$$1020 = 1915 - 40 + 125 - Q$$

$$Q = 2000 - 1020 = 980 \text{ J}$$

- 13.** In a hydrogen atom the electron makes a transition from $(n + 1)^{\text{th}}$ level to the n^{th} level. If $n \gg 1$, the frequency of radiation emitted is proportional to :

(1) $\frac{1}{n^2}$ (2) $\frac{1}{n}$ (3) $\frac{1}{n^3}$ (4) $\frac{1}{n^4}$

Sol. (3)

$$E_n = \frac{-Rhc}{n^2}$$

$$E_{n+1} = \frac{-Rhc}{(n+1)^2}$$

$$\Delta E = E_{n+1} - E_n$$

$$h\nu = Rhc \left[\frac{1}{n^2} - \frac{1}{(n+1)^2} \right]$$

CRASH COURSE
FOR JEE ADVANCED 2020

FREE Online Lectures Available on **YouTube**

Go Premium at ₹ 1100

◆ Doubt Support ◆ Advanced Level Test Access
◆ Live Test Paper Discussion ◆ Final Revision Exercises

Start Date: **07 Sept. 2020**

हमारा विश्वास... हर एक विद्यार्थी है खास

$$v = Rc \left[\frac{(n+1)^2 - n^2}{n^2 \cdot (n+1)^2} \right]$$

$$= Rc \left[\frac{1+2n}{n^2(n+1)^2} \right]$$

if $n > 1$

$$v = \frac{2n}{n^2 \times n^2} = \frac{2n}{n^4} = \frac{2}{n^3}$$

$$v \propto \frac{1}{n^3}$$

- 14.** When the temperature of a metal wire is increased from 0°C to 10°C , its length increases by 0.02%. The percentage change in its mass density will be closest to :
 (1) 0.06 (2) 0.008 (3) 2.3 (4) 0.8

Sol. (A)

$$\Delta \ell = \ell \propto \Delta t$$

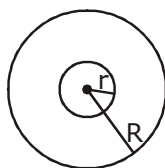
$$\alpha = \frac{\Delta \ell}{\ell \Delta t} = \frac{0.02}{100 \times 10} = 2 \times 10^{-5}$$

$$v = 3\alpha = 6 \times 10^{-5}$$

$$\text{Now, } \frac{\Delta v}{v} \times 100 = \gamma \cdot \Delta t \cdot 100 = 6 \times 10^{-5} \times 10 \times 100$$

$$= 6 \times 10^{-2} = 0.06$$

- 15.** A charge Q is distributed over two concentric conducting thin spherical shells radii r and R ($R > r$). If the surface charge densities on the two shells are equal, the electric potential at the common centre is:



$$(1) \frac{1}{4\pi\epsilon_0} \frac{(2R+r)}{(R^2+r^2)} Q$$

$$(2) \frac{1}{4\pi\epsilon_0} \frac{(R+r)}{(R^2+r^2)} Q$$

$$(3) \frac{1}{4\pi\epsilon_0} \frac{(R+r)}{2(R^2+r^2)} Q$$

$$(4) \frac{1}{4\pi\epsilon_0} \frac{(R+2r)}{2(R^2+r^2)} Q$$

CRASH COURSE
FOR JEE ADVANCED 2020

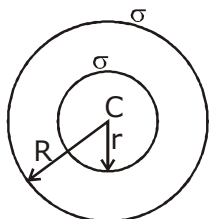
FREE Online Lectures Available on YouTube

Go Premium at ₹ 1100

◆ Doubt Support ◆ Advanced Level Test Access
 ◆ Live Test Paper Discussion ◆ Final Revision Exercises

Start Date: **07 Sept. 2020**

Sol. (2)



$$Q_1 = \sigma \cdot 4\pi r^2$$

$$Q_2 = \sigma \cdot 4\pi R^2$$

$$Q = 4\pi\sigma(R^2 + r^2)$$

$$\Rightarrow \sigma = \frac{Q}{4\pi(R^2 + r^2)}$$

$$V_c = \frac{KQ_1}{r} + \frac{KQ_2}{R}$$

$$= \frac{K\sigma 4\pi r^2}{r} + \frac{K\sigma 4\pi R^2}{R} = K\sigma 4\pi(r + R)$$

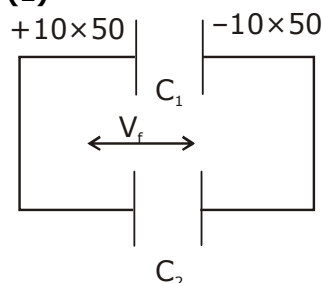
$$= 4\pi K \frac{Q}{4\pi(R^2 + r^2)}(r + R) = \frac{KQ(r + R)}{(R^2 + r^2)}$$

$$\frac{1}{4\pi\epsilon_0} \frac{(R + r)}{(R^2 + r^2)} \times Q$$

- 16.** A $10 \mu\text{F}$ capacitor is fully charged to a potential difference of 50V. After removing the source voltage it is connected to an uncharged capacitor in parallel. Now the potential difference across them becomes 20 V. The capacitance of the second capacitor is:

(1) $15 \mu\text{F}$ (2) $20 \mu\text{F}$ (3) $10 \mu\text{F}$ (4) $30 \mu\text{F}$

Sol. (1)



CRASH COURSE
FOR JEE ADVANCED 2020

FREE Online Lectures Available on YouTube

Go Premium at ₹ 1100

◆ Doubt Support ◆ Advanced Level Test Access
◆ Live Test Paper Discussion ◆ Final Revision Exercises

Start Date: **07 Sept. 2020**

हमारा विश्वास... हर एक विद्यार्थी है स्यास

$$C_1 = 10 \mu\text{F}$$

$$V_f = 20 \text{ V}$$

$$\frac{500}{C_1 + C_2} = 20$$

$$\frac{500}{10 + C_2} = 20$$

$$10 + C_2 = \frac{500}{20} = 25$$

$$C_2 = 15 \mu\text{F}$$

- 17.** An ideal gas in a closed container is slowly heated. As its temperature increases, which of the following statements are true?
- (A) the mean free path of the molecules decreases.
 (B) the mean collision time between the molecules decreases.
 (C) the mean free path remains unchanged.
 (D) the mean collision time remains unchanged.
- (1) (B) and (C) (2) (A) and (B) (3) (C) and (D) (4) (A) and (D)

Sol. (1) B,C

$$\lambda = \frac{1}{\sqrt{2} \left(\frac{N}{V} \right) \pi d^2}$$

$\lambda \rightarrow$ Mean free path

$N \rightarrow$ No. of molecules

$V =$ volume of container

$d =$ diameter of molecule

$\therefore N$ and V are constant

\therefore Mean free path remains unchanged.

Now, If $T \uparrow$ no. of collisions increases.

- 18.** A capillary tube made of glass of radius 0.15 mm is dipped vertically in a beaker filled with methylene iodide (surface tension = 0.05 Nm^{-1} , density = 667 kg m^{-3}) which rises to height h in the tube. It is observed that the two tangents drawn from liquid-glass interfaces (from opp. sides of the capillary) make an angle of 60° with one another. Then h is close to ($g = 10 \text{ ms}^{-2}$).
- (1) 0.172 m (2) 0.049 m (3) 0.087 m (4) 0.137 m

CRASH COURSE
FOR JEE ADVANCED 2020

FREE Online Lectures Available on YouTube

Go Premium at ₹ 1100

◆ Doubt Support ◆ Advanced Level Test Access
 ◆ Live Test Paper Discussion ◆ Final Revision Exercises

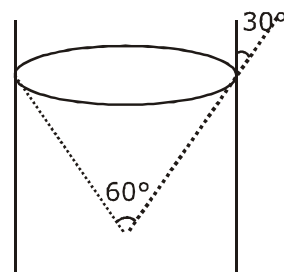
Start Date: **07 Sept. 2020**

Sol. (3)

$$h = \frac{2T \cos \theta}{\rho g r} \quad \{ \theta = 30^\circ \}$$

$$= \frac{2 \times 0.05 \times \frac{1}{2}}{667 \times 10 \times 0.15 \times 10^{-3}}$$

$$= 0.087 \text{ m option (3)}$$



19. The height 'h' at which the weight of a body will be the same as that at the same depth 'h' from the surface of the earth is (Radius of the earth is R and effect of the rotation of the earth is neglected):

(1) $\frac{\sqrt{3}R - R}{2}$

(2) $\frac{\sqrt{5}}{2}R - R$

(3) $\frac{\sqrt{5}R - R}{2}$

(4) $\frac{R}{2}$

Sol. (3)

$$\frac{g_0}{\left(1 + \frac{h}{R}\right)^2} = g_0 \left(1 - \frac{h}{R}\right)$$

$$\frac{R^2}{(R+h)^2} = \frac{(R-h)}{R}$$

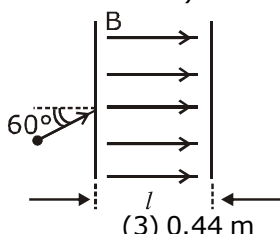
$$R^3 = (R-h)(R+h)^2$$

$$R^3 = (R-h)(R^2 + 2hR + h^2)$$

on solving we get,

$$h = \frac{\sqrt{5}R - R}{2}$$

20. The figure shows a region of length 'l' with a uniform magnetic field of 0.3 T in it and a proton entering the region with velocity $4 \times 10^5 \text{ ms}^{-1}$ making an angle 60° with the field. If the proton completes 10 revolution by the time it cross the region shown, 'l' is close to (mass of proton = $1.67 \times 10^{-27} \text{ kg}$, charge of the proton = $1.6 \times 10^{-19} \text{ C}$)



(1) 0.11 m

(2) 0.22 m

(3) 0.44 m

(4) 0.88 m

CRASH COURSE
FOR JEE ADVANCED 2020

FREE Online Lectures Available on YouTube

Go Premium at ₹ 1100

◆ Doubt Support ◆ Advanced Level Test Access
◆ Live Test Paper Discussion ◆ Final Revision Exercises

Start Date: **07 Sept. 2020**

हमारा विश्वास... हर एक विद्यार्थी है खास

Sol. (3)

$$\ell = 10 \times \text{pitch}$$

$$= 10 \times v \cos 60^\circ \times \frac{2\pi m}{qB}$$

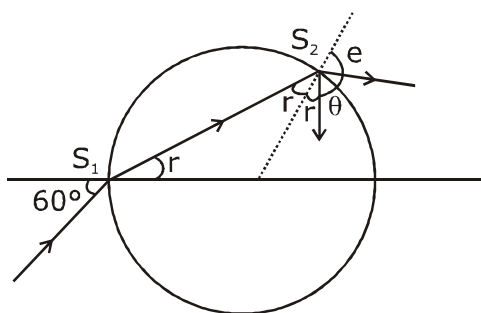
$$= 10 \times v \times \frac{1}{2} \times \frac{2\pi m}{qB}$$

$$\ell = \frac{10v\pi m}{qB} = \frac{10 \times 4 \times 10^5 \times 3.14 \times 1.67 \times 10^{-27}}{1.6 \times 10^{-19} \times 0.3}$$

$$\approx 0.44 \text{ m}$$

- 21.** A light ray enters a solid glass sphere of refractive index $\mu = \sqrt{3}$ at an angle of incidence 60° . The ray is both reflected and refracted at the farther surface of the sphere. The angle (in degrees) between the reflected and refracted rays at this surface is _____.

21. 90



At S_1

$$1 \times \sin 60^\circ = \sqrt{3} \sin r$$

$$r = 30^\circ$$

$$\therefore r_1 = 30^\circ \text{ \{from geometry\}}$$

$$\text{As } S_2 \quad \sqrt{3} \sin r_1 = 1 \sin e$$

$$e = 60^\circ$$

$$\text{Now, } r_1 + \theta + e = 180^\circ$$

$$\boxed{\theta = 90^\circ}$$

CRASH COURSE
FOR JEE ADVANCED 2020

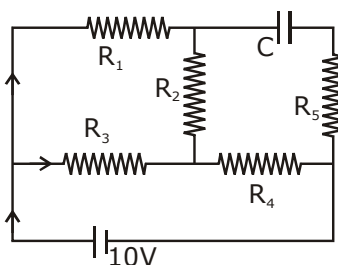
FREE Online Lectures Available on YouTube

Go Premium at ₹ 1100

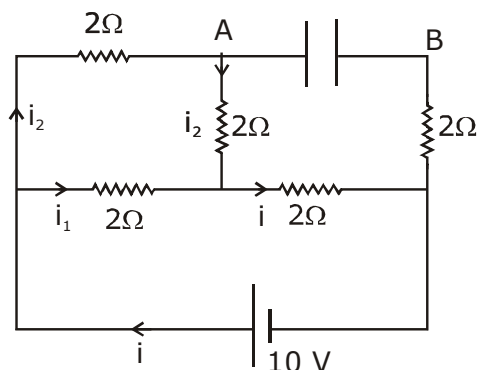
◆ Doubt Support ◆ Advanced Level Test Access
◆ Live Test Paper Discussion ◆ Final Revision Exercises

Start Date: **07 Sept. 2020**

22. An ideal cell of emf 10 V is connected in circuit shown in figure. Each resistance is 2Ω . The potential difference (in V) across the capacitor when it is fully charged is _____.



Sol. 8



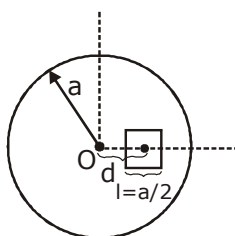
$$i = \frac{10}{\frac{4}{3} + 2} = \frac{10 \times 3}{10} = 3 \text{ Amp}$$

$$i_1 = 2 \text{ Amp}$$

$$i_2 = 1 \text{ Amp}$$

$$V_{AB} = 1 \times 2 + 3 \times 2 = 8 \text{ V}$$

23. A square shaped hole of side $l = \frac{a}{2}$ is carved out at a distance $d = \frac{a}{2}$ from the centre 'O' of a uniform circular disk of radius a . If the distance of the centre of mass of the remaining portion from O is $-\frac{a}{X}$, value of X (to the nearest integer) is _____.



CRASH COURSE
FOR JEE ADVANCED 2020

FREE Online Lectures Available on YouTube

Go Premium at ₹ 1100

◆ Doubt Support ◆ Advanced Level Test Access
◆ Live Test Paper Discussion ◆ Final Revision Exercises

Start Date: **07 Sept. 2020**

हमारा विश्वास... हर एक विद्यार्थी है खास

Sol. 23

$$X_{cm} = \frac{\pi a^2 \times 0 - \frac{a^2}{4} \times \frac{a}{2}}{\pi a^2 - \frac{a^2}{4}}$$

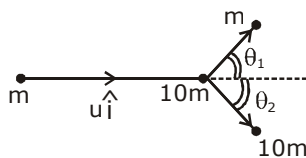
$$= \frac{-a}{2(4\pi - 1)} = \frac{-a}{8\pi - 2}$$

$$X = (8\pi - 2) = 8 \times 3.14 - 2$$

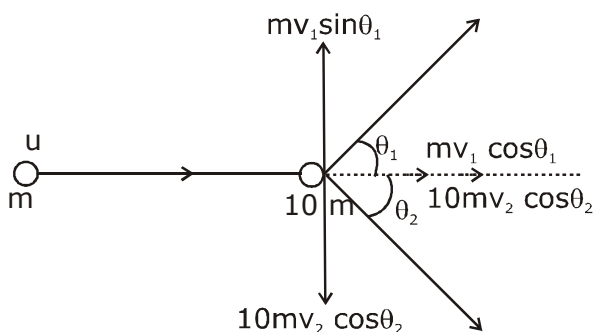
$$= 23.12$$

$$\text{Nearest Integer} = 23$$

24. A particle of mass m is moving along the x -axis with initial velocity $u\hat{i}$. It collides elastically with a particle of mass $10m$ at rest and then moves with half its initial kinetic energy (see figure). If $\sin\theta_1 = \sqrt{n} \sin\theta_2$ then value of n is



24. 10



$$\frac{1}{2}mv_1^2 = \frac{1}{2}\left(\frac{1}{2}mu^2\right)$$

$$v_1^2 = \frac{u^2}{2}$$

CRASH COURSE
FOR JEE ADVANCED 2020

FREE Online Lectures Available on YouTube

Go Premium at ₹ 1100

◆ Doubt Support ◆ Advanced Level Test Access
◆ Live Test Paper Discussion ◆ Final Revision Exercises

Start Date: **07 Sept. 2020**

$$v_1 = \frac{u}{\sqrt{2}} \quad \dots(i)$$

Also, $\frac{1}{2}mu^2 = \frac{1}{2}mv_1^2 + \frac{1}{2} \times (10m) \times v_2^2$

$$\frac{1}{2} \times 10m \times v_2^2 = \frac{1}{2} \times \frac{1}{2}mu^2$$

$$v_2^2 = \frac{u^2}{20} \quad \text{or, } v_2 = \frac{u}{\sqrt{20}}$$

now, $mv_1 \sin \theta_1 = 10mv_2 \sin \theta_2$

$$\frac{u}{\sqrt{2}} \sin \theta_1 = 10 \times \frac{u}{\sqrt{20}} \sin \theta_2$$

$$\sin \theta_1 = \frac{10}{\sqrt{10}} \sin \theta_2$$

$$\sin \theta_1 = \sqrt{10} \sin \theta_2$$

$$\therefore \boxed{n=10} \text{ ans}$$

- 25.** A wire of density $9 \times 10^{-3} \text{ kg cm}^{-3}$ is stretched between two clamps 1 m apart. The resulting strain in the wire is 4.9×10^{-4} . The lowest frequency of the transverse vibrations in the wire is (Young's modulus of wire $Y = 9 \times 10^{10} \text{ Nm}^{-2}$), (to the nearest integer), _____.

Sol. 35

$$f = \frac{1}{2\ell} \sqrt{\frac{T}{\mu}} = \frac{1}{2\ell} \sqrt{\frac{T}{\rho A}} = \frac{1}{2\ell} \sqrt{\frac{YA\epsilon}{\rho \ell}}$$

$$f = \frac{1}{2 \times 1} \sqrt{\frac{9 \times 10^{10} \times 4.9 \times 10^{-4}}{9000 \times 1}}$$

$$= \frac{1}{2} \sqrt{49 \times 100} = 35 \text{ Hz ans}$$

CRASH COURSE
FOR JEE ADVANCED 2020

FREE Online Lectures Available on **You Tube**

Go Premium at ₹ 1100

◆ Doubt Support ◆ Advanced Level Test Access
◆ Live Test Paper Discussion ◆ Final Revision Exercises

Start Date: **07 Sept. 2020**

जब इन्होंने पूरा किया अपना सपना
तो आप भी पा सकते है लक्ष्य अपना

Admission
OPEN

JEE MAIN RESULT 2019



Nitin Gupta

Marks
335
13th (2019)

Marks
149
12th (2018)



Shiv Modi

Marks
318
13th (2019)

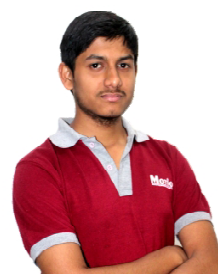
Marks
153
12th (2018)



Ritik Bansal

Marks
308
13th (2019)

Marks
218
12th (2018)



Shubham Kumar

Marks
300
13th (2019)

Marks
153
12th (2018)

KOTA'S PIONEER IN DIGITAL EDUCATION

1,95,00,000+ viewers | **72,67,900+** viewing hours | **2,11,000+** Subscribers

SERVICES	SILVER	GOLD	PLATINUM
Classroom Lectures (VOD)			
Live interaction	NA		
Doubt Support	NA		
Academic & Technical Support	NA		
Complete access to all content	NA		
Classroom Study Material	NA		
Exercise Sheets	NA		
Recorded Video Solutions	NA		
Online Test Series	NA		
Revision Material	NA		
Upgrade to Regular Classroom program	Chargeable	Chargeable	Free
Physical Classroom	NA	NA	
Computer Based Test	NA	NA	
Student Performance Report	NA	NA	
Workshop & Camp	NA	NA	
Motion Solution Lab- Supervised learning and instant doubt clearance	NA	NA	
Personalised guidance and mentoring	NA	NA	

FEE STRUCTURE

CLASS	SILVER	GOLD	PLATINUM
7th/8th	FREE	₹ 12,000	₹ 35,000
9th/10th	FREE	₹ 15,000	₹ 40,000
11th	FREE	₹ 29,999	₹ 49,999
12th	FREE	₹ 39,999	₹ 54,999
12th Pass	FREE	₹ 39,999	₹ 59,999

+ Student Kit will be provided at extra cost to Platinum Student.

- * **SILVER (Trial)** Only valid 7 DAYS or First 10 Hour's Lectures.
- ** **GOLD (Online)** can be converted to regular classroom (Any MOTION Center) by paying difference amount after lockdown.
- *** **PLATINUM (Online + Regular)** can be converted to regular classroom (Any MOTION Center) without any cost after lockdown.

New Batch Starting from :
16 & 23 September 2020

Zero Cost EMI Available

MOTION™

H.O. : 394, Rajeev Gandhi Nagar, Kota
www.motion.ac.in | info@motion.ac.in